



Jefferson 4K Overview

The 4K program is intended to be a one-year pre-kindergarten program.

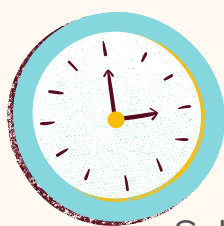
In Wisconsin, state statutes clearly define that age is the only criteria for entering 4K (child must be 4 years old on or before September 1st). We encourage parents to enroll their age-eligible child and not delay entrance based on concern the child is going to be young for his or her class. Children arrive in 4K with a wide variety of abilities, and that is perfectly normal. Our responsibility is to meet the needs of all children regardless of their age or developmental level.

The School District of Jefferson is committed to providing a quality educational program for your four-year-old in a nurturing, play-based, and developmentally appropriate preschool environment. We believe that instead of equipping children with specific academic skills in 4K, we can best prepare your child for school by providing opportunities to learn through playing, talking, experimenting, and interacting in a relaxed and supportive environment. We believe children grow and develop at different rates, but that all are born with a great capacity to learn.

For more information regarding the School District of Jefferson, please visit our website:
www.sdoj.org

SDOJ 4K FAQ:

What is the schedule for 4K?



School District of Jefferson 4K Programming (Half-day)

Starting with the 2024-25 school year, we will offer 4K in the AM and PM at Jefferson Early Learning Center (located at East Elementary), and in the AM at Sullivan Elementary. Half day programs run Monday - Thursday. The AM sessions run from 8:00 am - 11:10 am, and the PM sessions run from 11:50 am - 3:00 pm.

Full Day Programming (SDoJ partnership with Head Start)

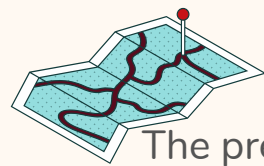
Head Start eligible students will be offered full day placement at the Jefferson Early Learning Center (located at East Elementary). The program runs Monday - Thursday from 8:00 am - 3:00 pm. Eligible students will be offered placement in the AM Jefferson County Head Start Classroom, and in a PM School District of Jefferson 4K Classroom. Students will be provided breakfast and lunch through Head Start. After lunch, students will be walked from the Head Start classroom to the 4K classroom, which is located in the classroom next door.

How do I enroll my child in 4K?

Complete the pre-registration form online at sdoj.org OR Come in to fill out a pre-registration form at the district office (206 S. Taft Ave.), at one of our community partners, or at any of our school buildings.



Which location will my child attend?



The pre-registration form asks parents to list their 4K site preference. The School District will make every effort possible to honor parents' first preference. If a family does not receive their first preference, the 4K Administrator will contact the family to discuss options.

Will busing be available for my child?

If a family lives outside the city limits of Jefferson, busing will be made available to their child. A **free** shuttle is provided to and from 4K to all licensed daycare centers within school district boundaries (KidSpace, Learning Links, Little Eagles, St. Johns Lutheran Childcare, and St. Peter's Childcare). If a family resides within the city limits and would like busing to and/or from 4K and home, contract services may be purchased through Dousman Transport.



Can my child open enroll into the 4K program if we reside in another district's boundaries?



A family may open enroll their child into the Jefferson 4K program as long as their resident district also has a 4K program. For more information, please visit the Wisconsin DPI website: <http://dpi.wi.gov/open-enrollment>

If we move into the district after Sept. 1st, can we still sign up?

Yes. Please contact the 4K Office (contact below) to go through the enrollment process.



Does the District offer wrap-around childcare?

Wrap-around childcare is offered at both East and Sullivan Elementaries from 7:00 am-6:00 pm. (Both locations also offer all-day Friday care). Families are responsible for arranging and paying the cost of childcare beyond the 4K hours.

Is there a fee?

The school district-sponsored portion of the day is tuition-free. However, there is a one-time \$20 registration fee.



All classrooms are taught by highly qualified DPI licensed teachers.

District Contact Information

4K Administrator

Sullivan Elementary Principal
Nikki Krause
(920) 675-1510
krausek@sdoj.org

Enrollment:

4K Administrative Assistant
Andrea Bonofiglio
(920) 675-1043
bonofiglio@sdoj.org

Jefferson Early Learning Center 4K Located at East Elementary

120 S. Sanborn Ave.
Lisa Morris & Jessica Lipshetz
(920) 675-1400
morrisl@sdoj.org / lipshetzj@sdoj.org

Sullivan Elementary 4K

618 Bakertown Rd.
Katie Trefftz
(920) 675-1500
trefftzsk@sdoj.org